

Mango64R3 Hardware Manual

[S3C6410 EVB]

<http://www.mangoboard.com/>

<http://cafe.naver.com/embeddedcrazyboys>

Crazy Embedded Laboratory

Document History

| Revision | Date | Change note |
|----------|------|-------------|
| | | |
| | | |

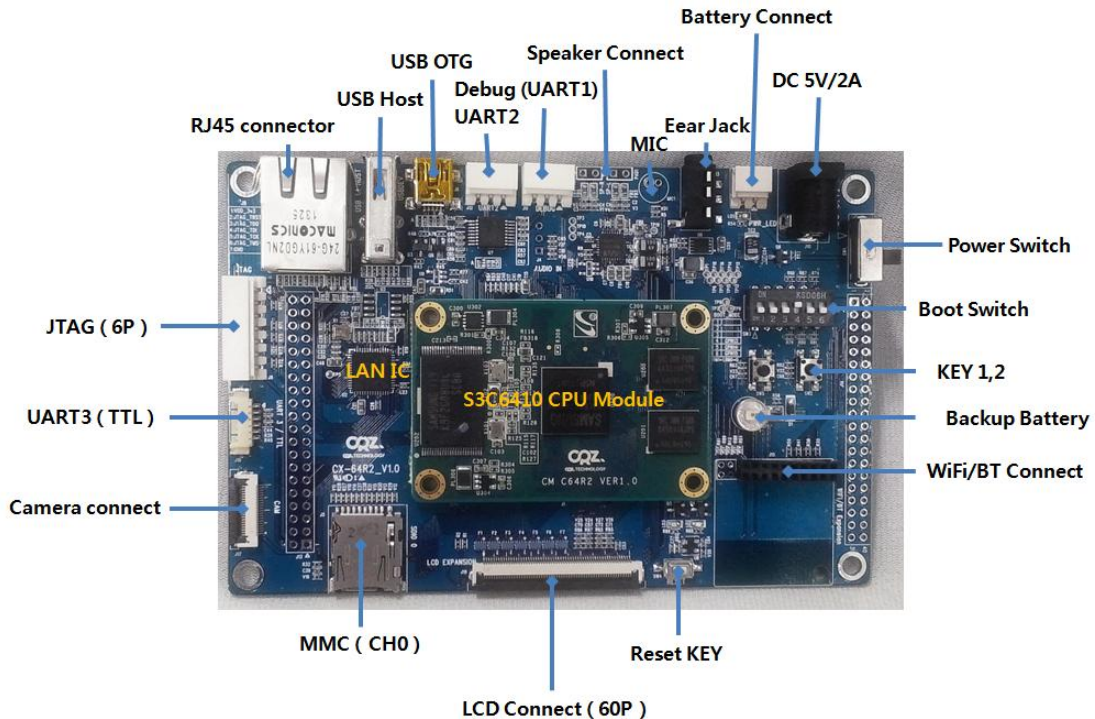
목차

| | |
|---------------------|------------------------|
| 제품소개 | 4 |
| SPECIFICATION | 5 |
| PCB SIZE | 5 |
| Manual | 오류! 책갈피가 정의되어 있지 않습니다. |

제품소개

ARM1176 삼성 S3C6410 CPU로 제작된 자작 보드,
Firmware, RTOS, Linux, Wince 공부에 적합한 보드로서,
CPU 모듈 보드와 확장보드로 나누어 설계를 했습니다.

- Firmware, RTOS (eCoS외 기타), Widows CE 6.0, Linux 지원
- USB Host, USB Device, 10/100 Mbps Ethernet, microSD socket, Audio Codec 기본 지원
- WIFI/Bluetooth, 각종 TFT LCD, GPS, Camera 인터페이스 확장 지원



문의: help@crz-tech.com

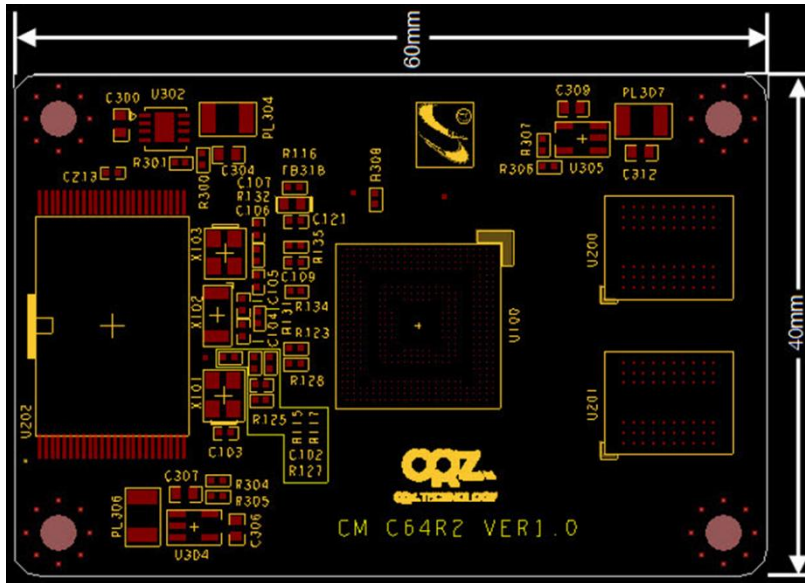
팩스: 031-701-5024, 연락처: 031-701-5057

SPECIFICATION

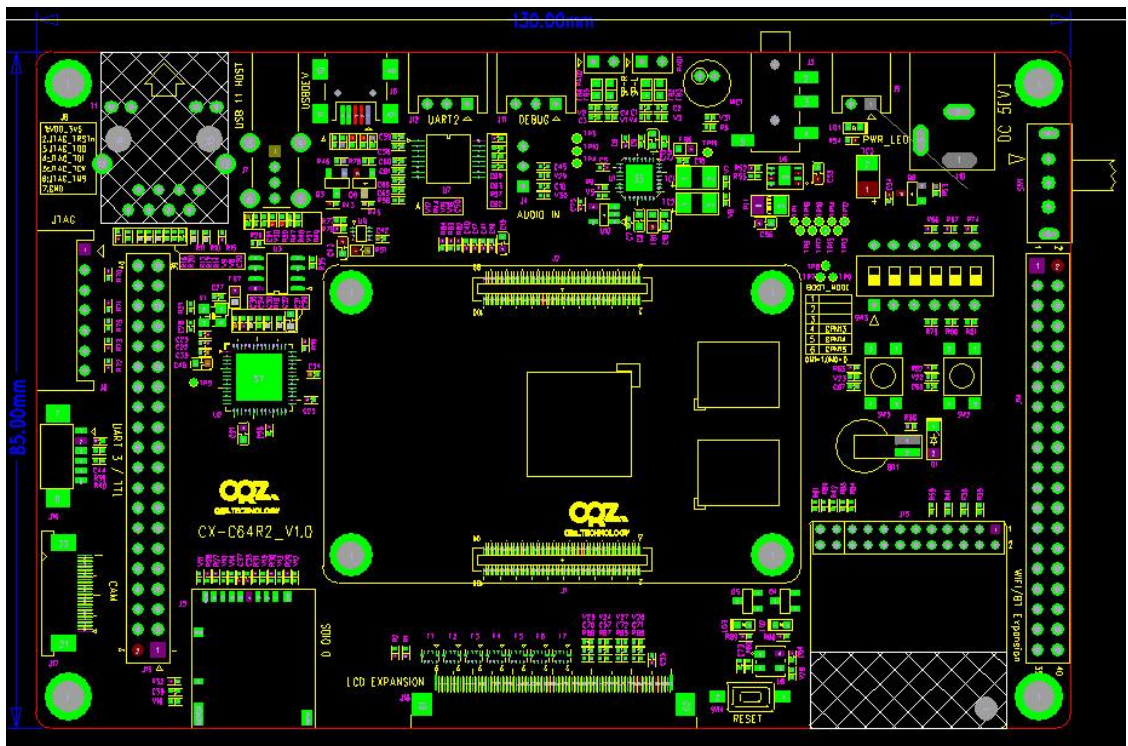
| | | |
|----------------------|---|----------------------------------|
| CPU | Samsung S3C6410 | ARM1176JZF-S 533/667MHz |
| Memory | Mobile DDR | 128Mbytes |
| | SLC NAND Flash | 256Mbytes |
| Display | 7" WVGA(800x480) Color TFT | with Touch Screen Interface |
| Audio | Wolfson WM8960 Audio Codec | with 1W Stereo Speaker Amplifier |
| Ethernet | SMSC LAN9220 | 10/100Mbps |
| USB | USB 1.1 Host | |
| | USB 2.0 OTG | |
| SD | SD/MMC Port 0 | Standard SD Connector |
| | SD/MMC Port 1 | WiFi Expansion Connector |
| | SD/MMC Port 2 | Expansion Connector |
| UART | UART Port 0 | Bluetooth or Expansion Connector |
| | UART Port 1 | Standard Debug Port |
| | UART Port 2 | Expansion Connector |
| | UART Port 3 | GPS or Expansion |
| JTAG | Standard ARM | JTAG Interface |
| WiFi/Bluetooth | SDIO ,802.11b,g,n 지원, BT(UART0 or SDIO) | |
| GPS | UART3 | |
| Camera | support Interlaced and Non-Interlaced CCIR601/656 Standard Camera Interface | |
| Keys | 2 General Purpose Keys | |
| | 1 Reset Keys | |
| Indicators | 2 Indicator LED controllable | GPIO ports |
| Expansion Connectors | IrDA, Camera, I2S, SPI0/SPI1, SDIO0/2, EBI, UART, LCD | |

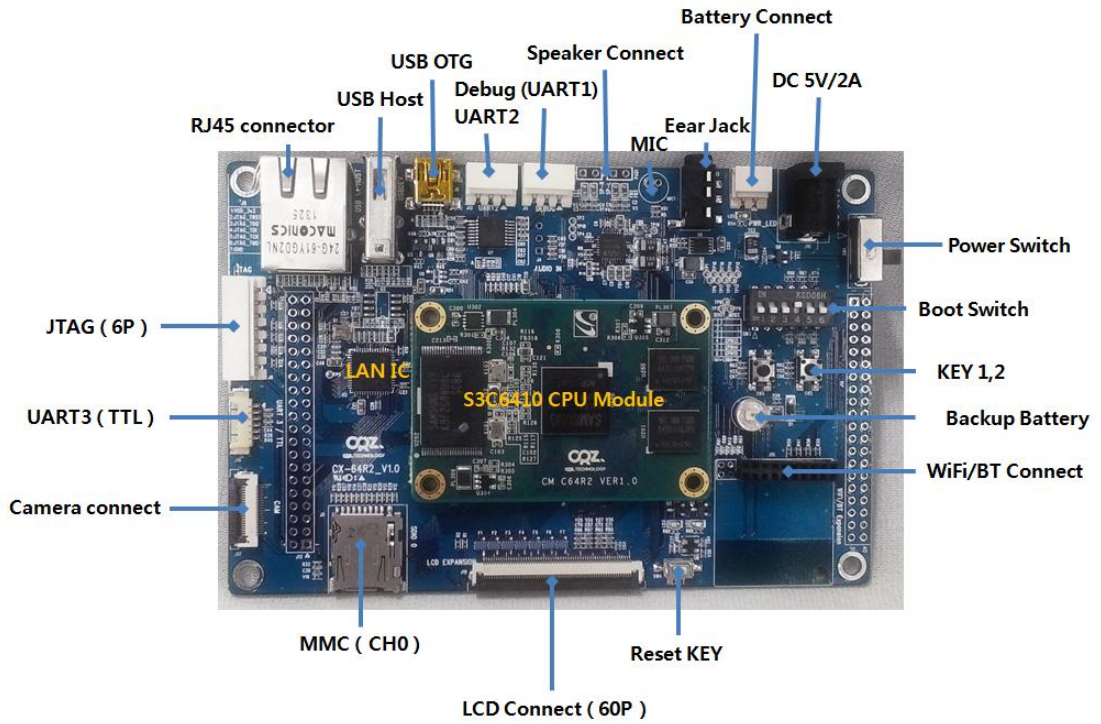
PCB SIZE

<CM-S3C6410 CPU Module>

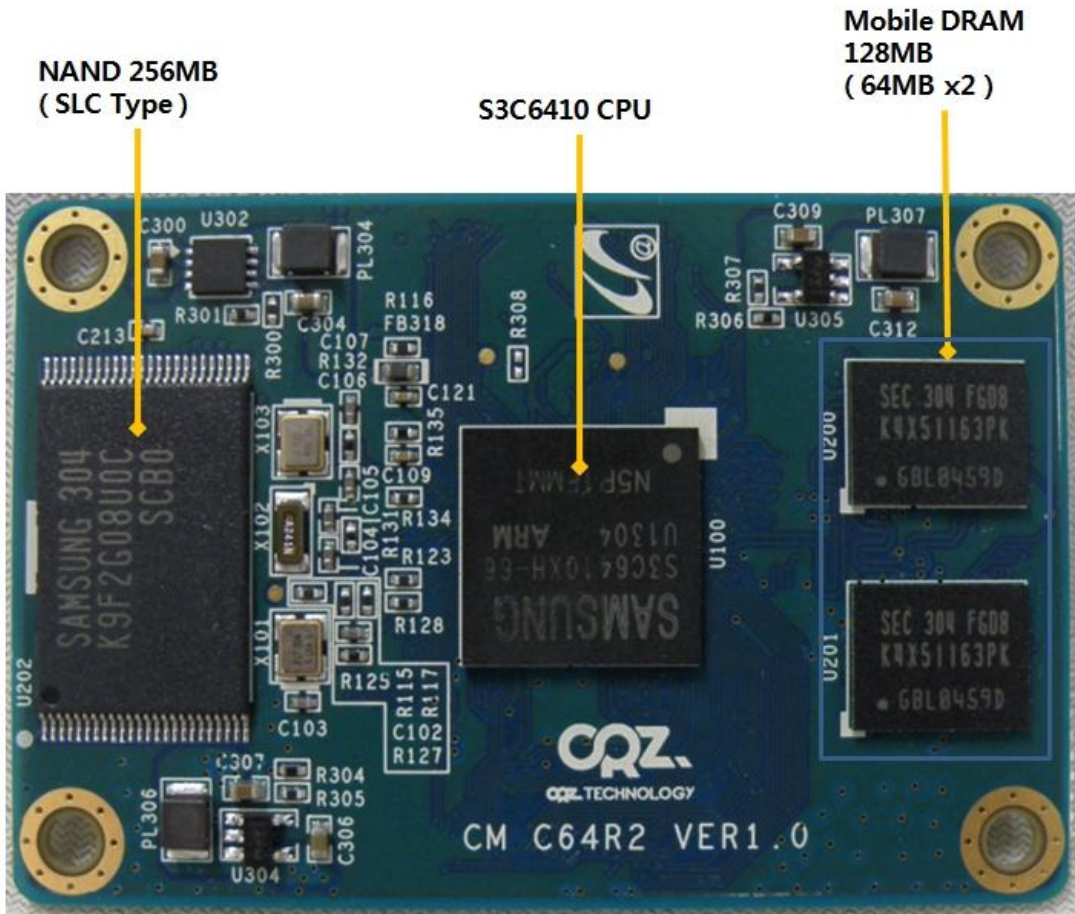


<CX-S3C6410 Base >

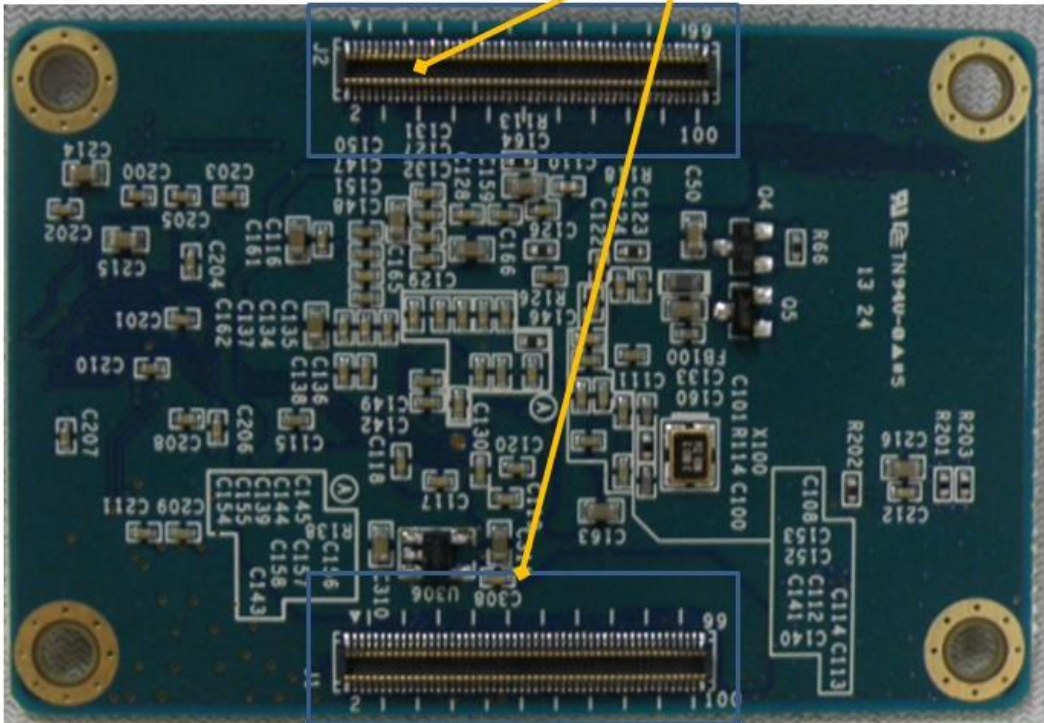




<CPU Module>



100 expansion Connect x 2ea



부팅 모드

NAND Mode : 2, 3 ON , 나머지 Off

