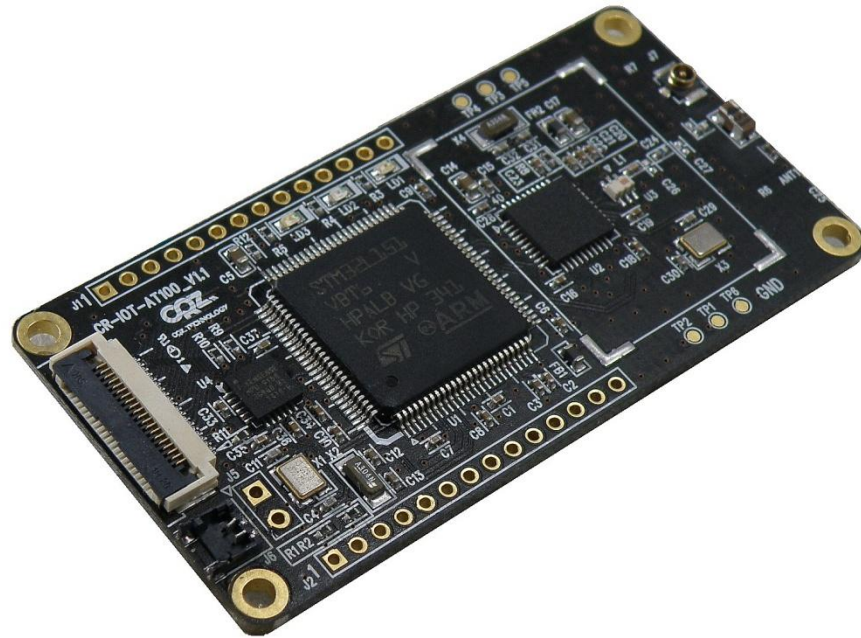


# zFrog IoT Thing Board (CR-IOT-AT100) ZigBee Image Write Guide

**CRZ.**

CRZ. TECHNOLOGY



zFrog IoT Thing Board (CR-IOT-AT100)

# How to get an image

**1** Download an attachment

**2** Unzip the file

1. at100\_device\_115200.hex
2. at100\_coordinator\_115200.hex



# How to get a tool

**1** Download SmartRF Flash tool

[SmartRF Flash Programmer](#)

Download Site Open

## Order Now

Part Number	Buy from Texas Instruments or Third Party
FLASH-PROGRAMMER: SmartRF Flash Programmer	Free <a href="#">Get Software</a>



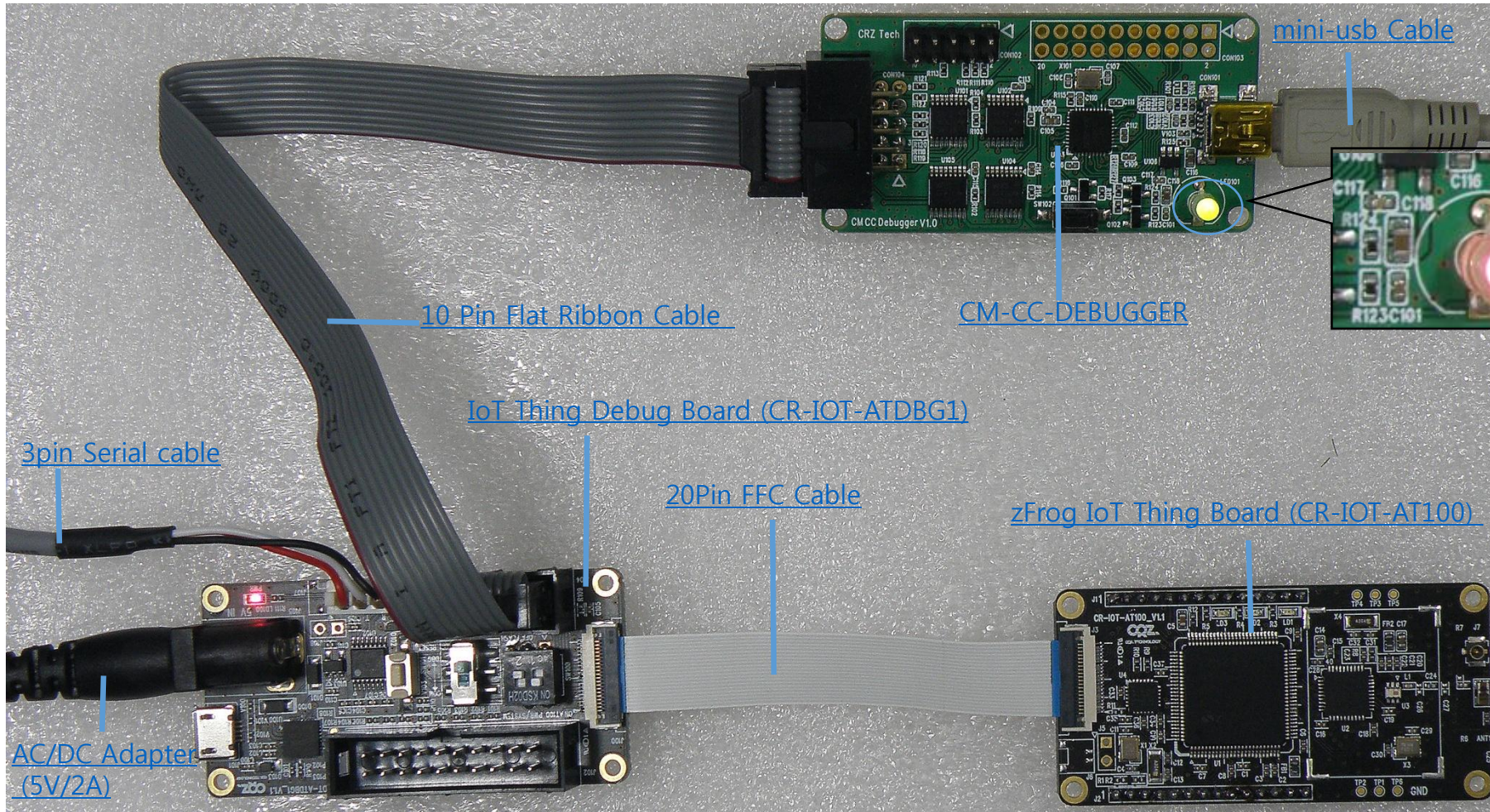
# Necessary equipment

- ❖ Boards : [zFrog IoT Thing Board \(CR-IOT-AT100\)](#) , [CR-IOT-ATBG1](#), [CM-CC-DEBUGGER](#), [RS-232 모듈](#)
- ❖ Cables : [20Pin Ribbon Flex Cable](#) , [mini-usb Cable](#) , [10 Pin Flat Ribbon Cable](#)
- ❖ Power Supply : [5V /2A adapter](#)





# How to connect

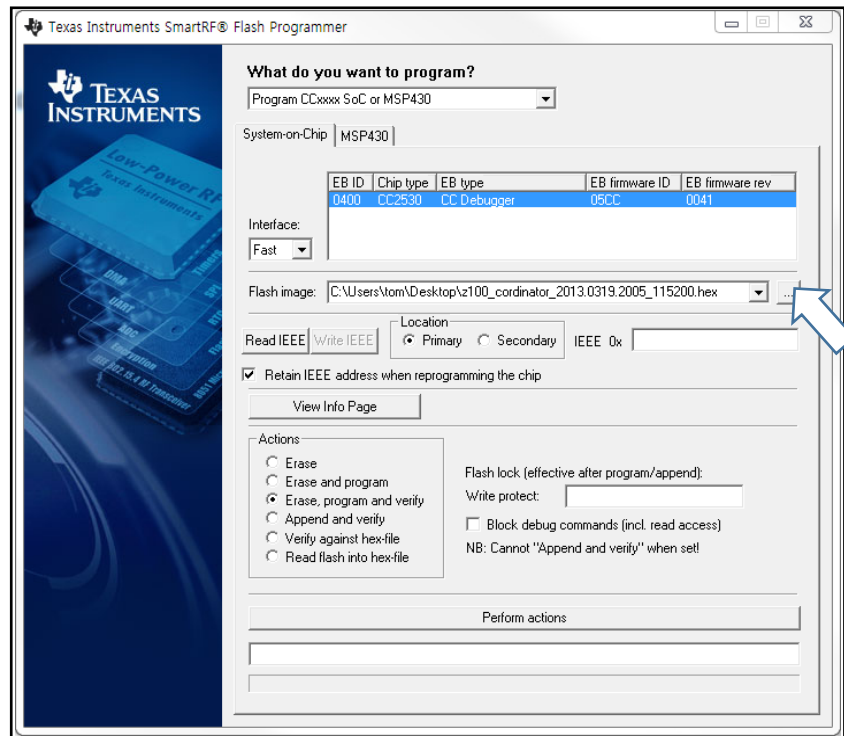


LED glows red, in case of an error. Go to 8 page

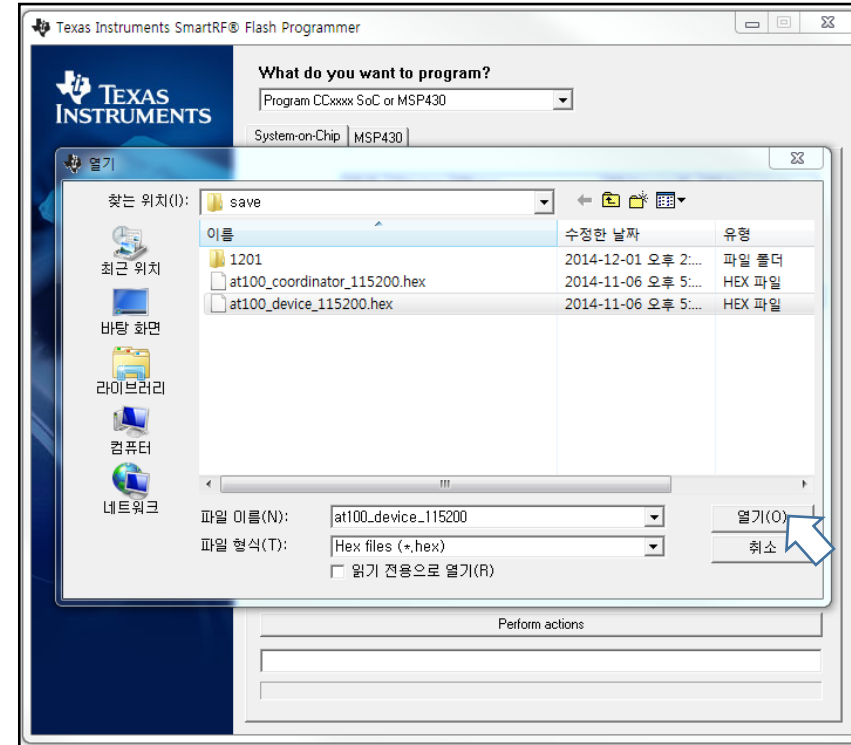


# How to ZigBee Image Write

## 1 Program run



## 2 Select the flash image



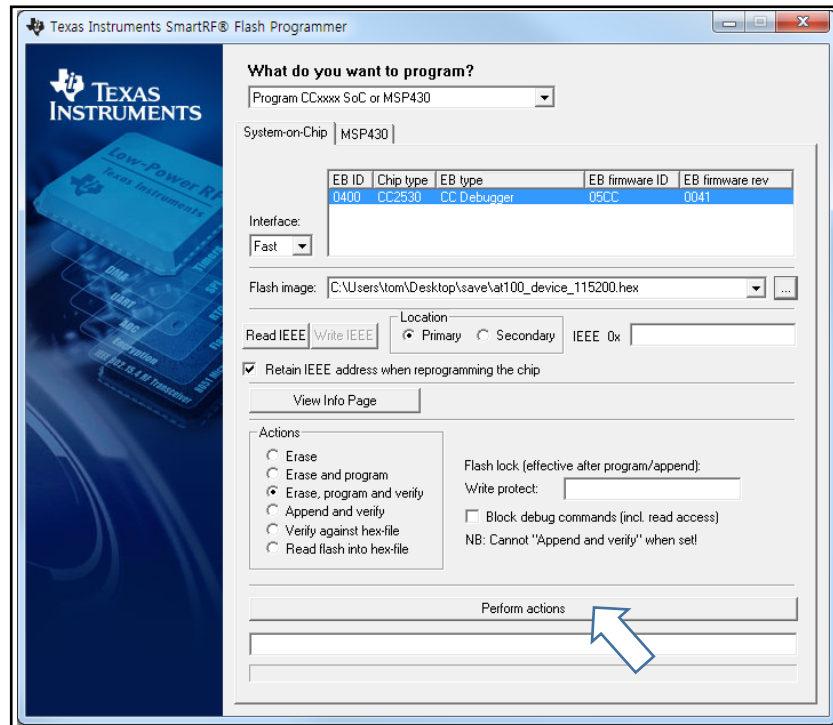
First CR-IOT-AT100 device, select the flash image to at100\_device\_115200.hex  
Second CR-IOT-AT100 device, select the flash image to at100\_coordinator\_115200.hex



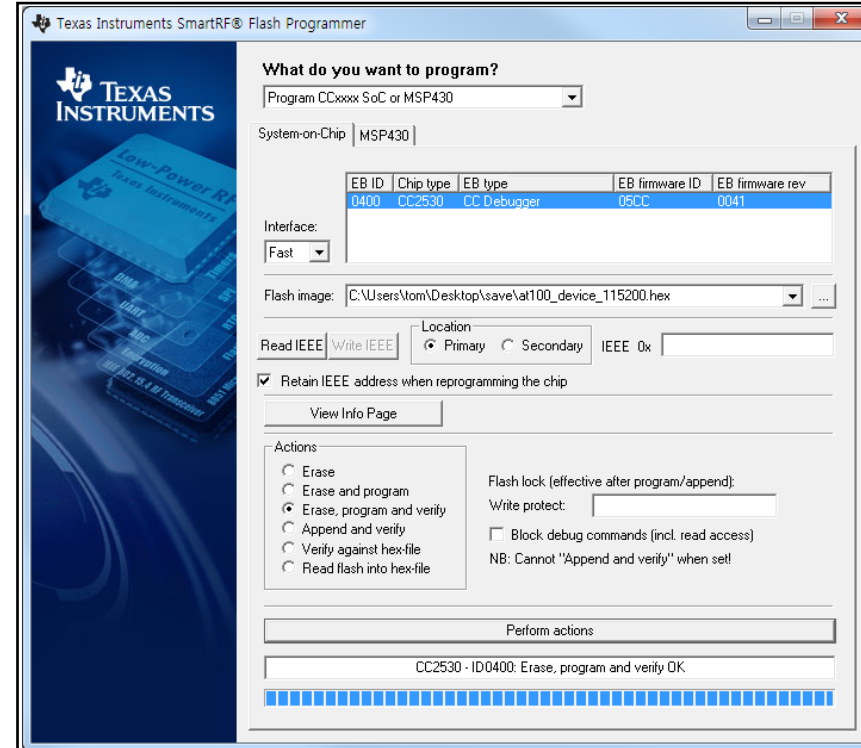


# How to ZigBee Image Write

## 1 Perform actions Click

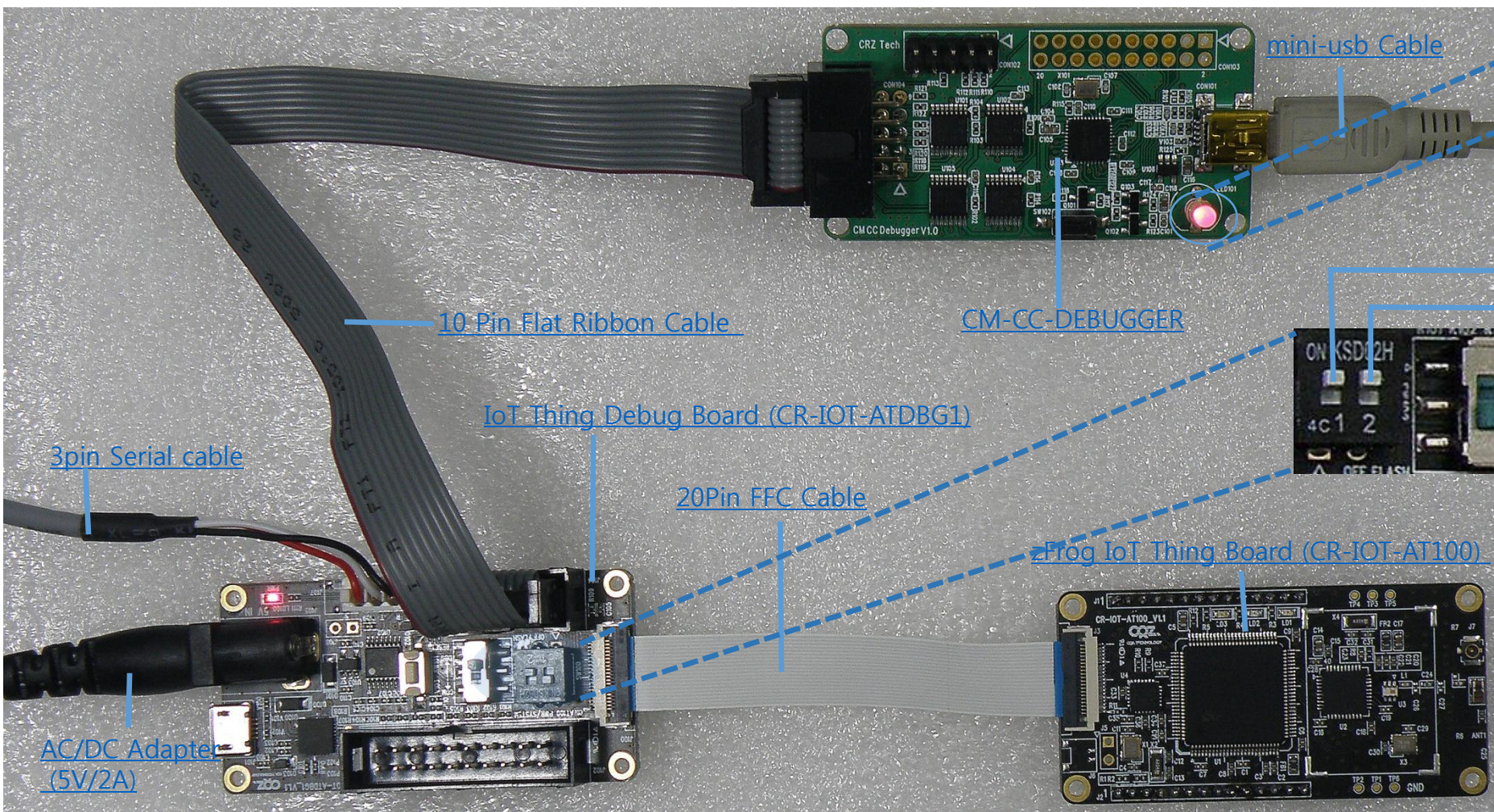


## 2 Finish the download



# If the CM-CC-Debugger error

## 1 Setting switch



LED glows red, in case of an error

- Power switch ↑
- Boot switch ↓
- UART Select switch ↓

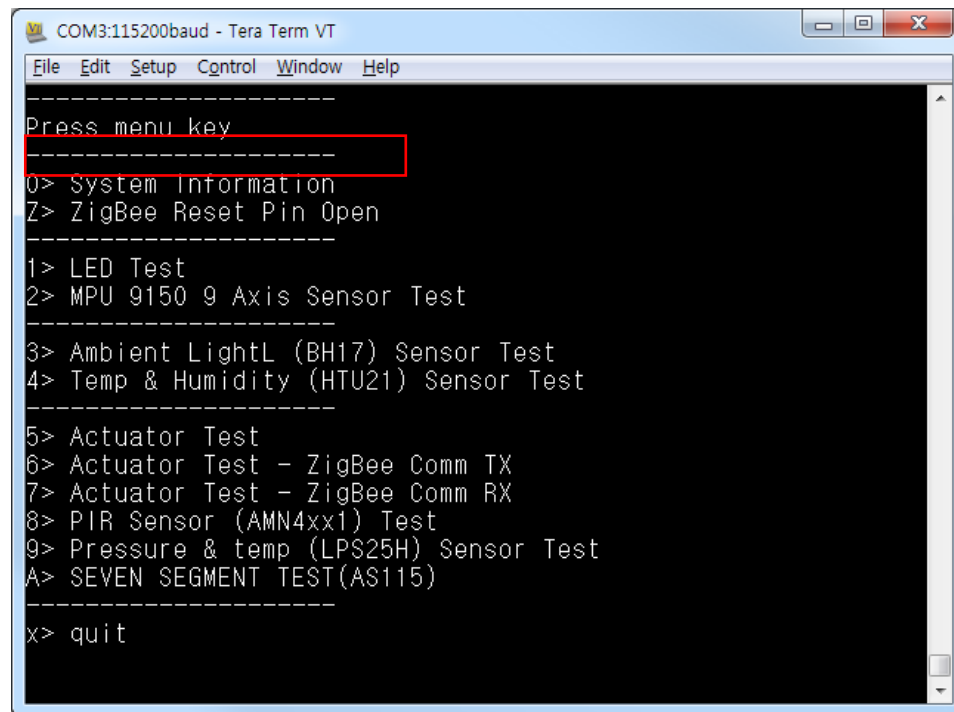




# If the CM-CC-Debugger error

2

CR-IOT-AT100 부팅  
Open terminal program  
And select "Z> ZigBee Reset Pin Open"

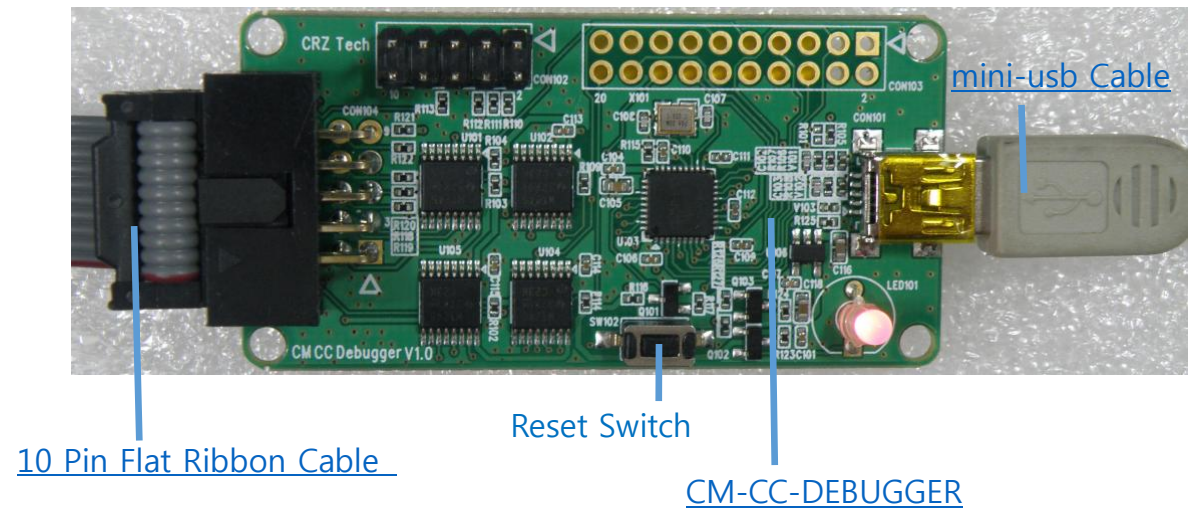


```
COM3:115200baud - Tera Term VT
File Edit Setup Control Window Help
-----
Press menu key
-----
0> System Information
Z> ZigBee Reset Pin Open
-----
1> LED Test
2> MPU 9150 9 Axis Sensor Test
-----
3> Ambient LightL (BH17) Sensor Test
4> Temp & Humidity (HTU21) Sensor Test
-----
5> Actuator Test
6> Actuator Test - ZigBee Comm TX
7> Actuator Test - ZigBee Comm RX
8> PIR Sensor (AMN4xx1) Test
9> Pressure & temp (LPS25H) Sensor Test
A> SEVEN SEGMENT TEST(AS115)
-----
x> quit
```

Input "z". ZigBee Reset Pin Open.

3

Push the Reset Switch, LED glows green



# Related Guide

- ❖ [Quick Start Guide zFrog IoT Thing Board \(CR-IOT-AT100\)](#)
- ❖ [적외선 감지 센서와 zFrog IoT Thing Board\(CR-IOT-AT100\) 이용한 침입 감지 시스템](#)
- ❖ [zFrog IoT Thing Board ZigBee 통신 Test Guide](#)





For more information , visit  
<http://www.mangoboard.com>  
<http://cafe.naver.com/embeddedcrazyboys>